

BEACH RESORT & SPA

manava
BEACH RESORT & SPA - MOOREA

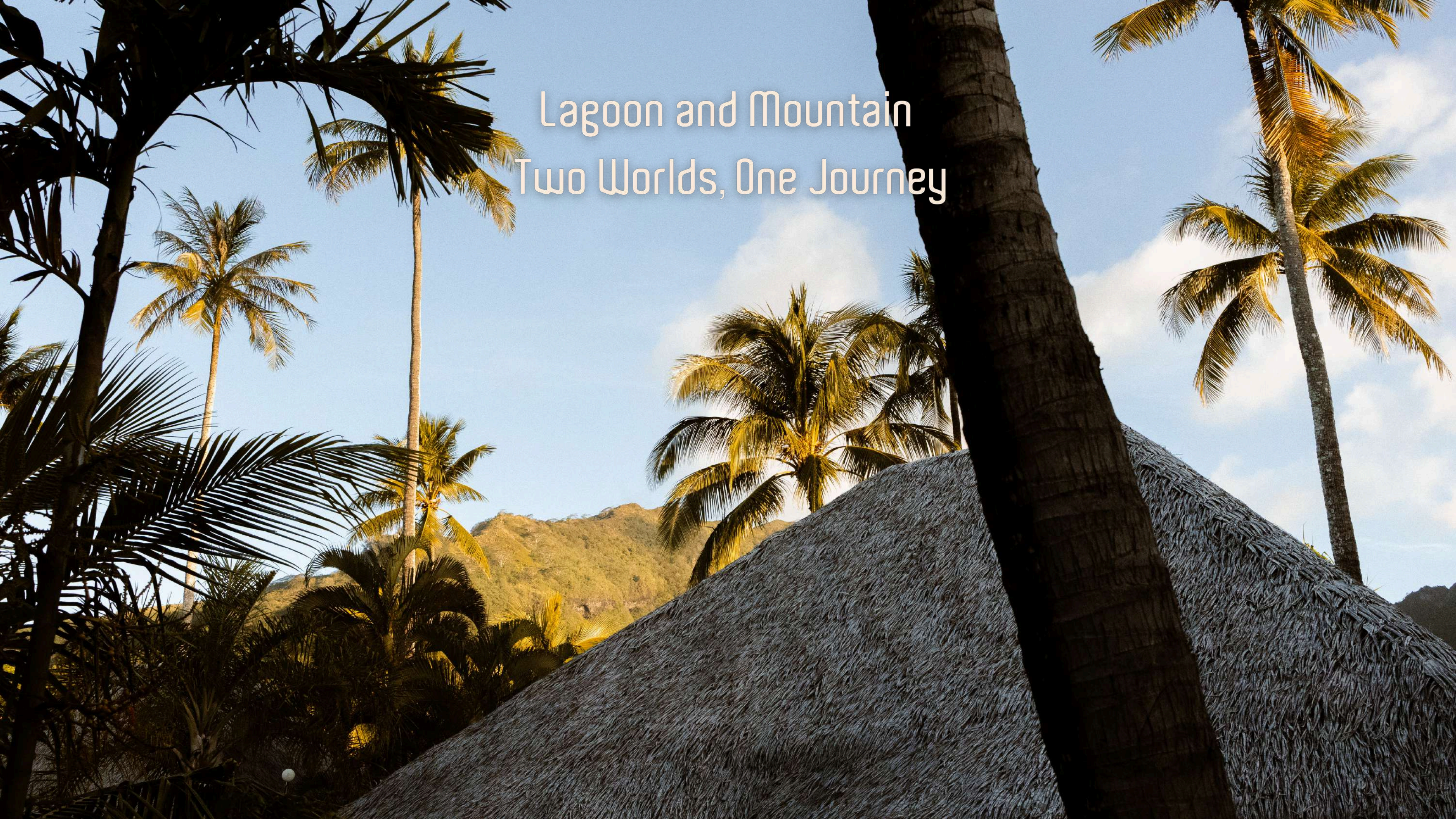
MEDIA KIT



Born in the 1960s through the vision of the Bali Hai Boys, overwater bungalows first appeared in Moorea, on the very site of today's Manava Beach Resort & Spa.

Designed to offer a unique view of the lagoon through a glass floor, these iconic bungalows revolutionized tourism in Polynesia and inspired hotel architecture around the world.

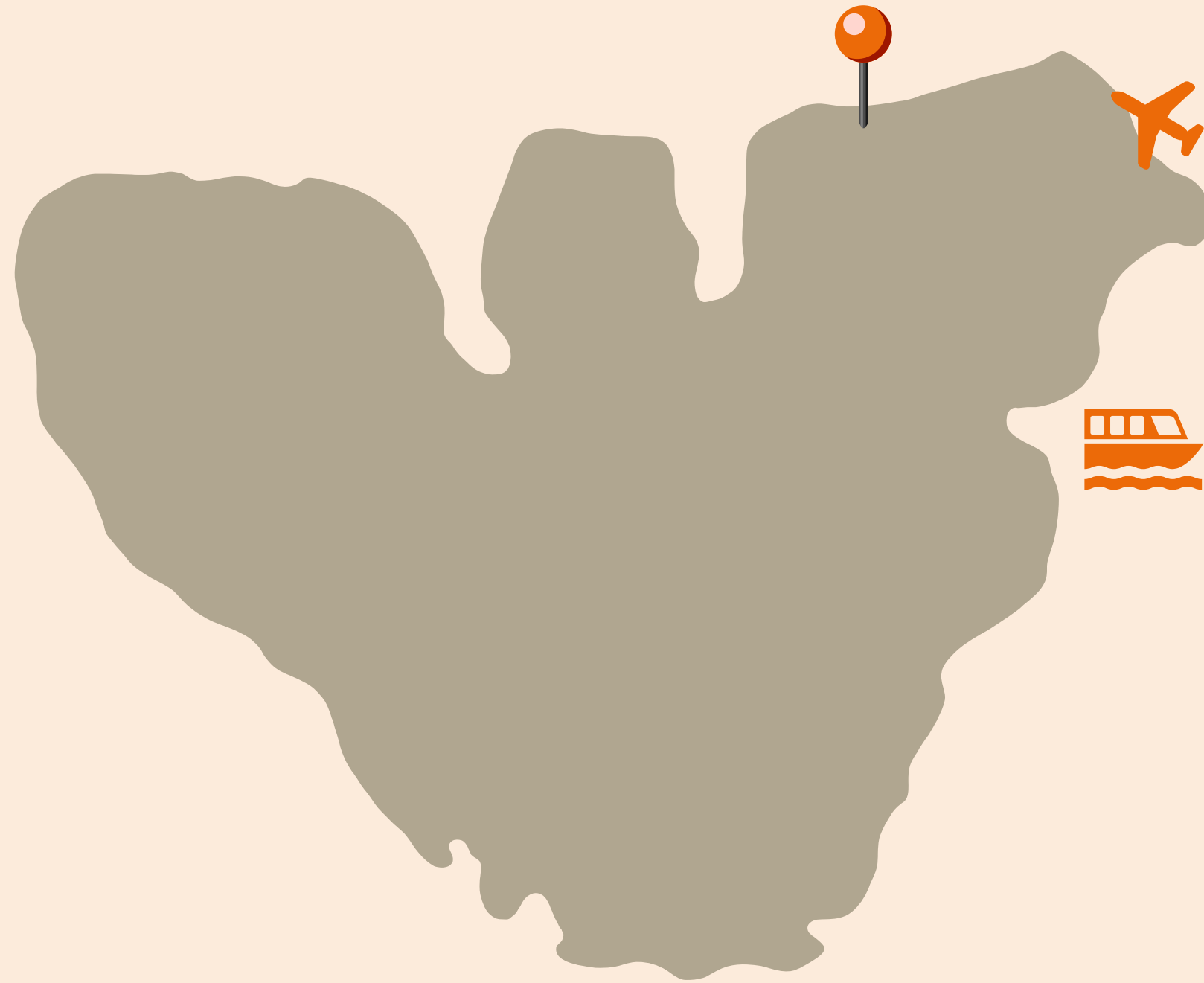
Today, Manava Beach Resort & Spa Moorea proudly carries on this pioneering spirit, seamlessly blending Polynesian tradition with contemporary elegance for an immersive, exclusive, and unforgettable experience.

A low-angle photograph of a tropical landscape. In the foreground, a large, dark palm tree trunk is on the right, and a thatched-roof hut is visible. The background shows more palm trees and a green mountain under a blue sky with light clouds. The text "Lagoon and Mountain" and "Two Worlds, One Journey" is overlaid in the upper center.

Lagoon and Mountain

Two Worlds, One Journey

manava
BEACH RESORT & SPA - MOOREA



Ideally located just 10 minutes from the airport
and 15 minutes from the ferry dock,
the hotel sits along the Maharepa coastline,
nestled between the majestic Cook's Bay
and the Jack Nicklaus-designed Moorea Golf Course.

It offers a tranquil setting, just steps away from the village's
shops and restaurants.

A row of five thatched-roof huts, likely overwater bungalows, stands on stilts over a body of water. The scene is captured at sunset, with the sun low on the horizon, casting a warm, golden glow across the sky and reflecting on the water. The huts are silhouetted against the bright sky, and their reflection is visible in the calm water below. The sky is filled with soft, wispy clouds, and the overall atmosphere is peaceful and serene.

Hidden Retreats in the Heart of Polynesia

In the heart of an elegant setting, Manava Beach Resort & Spa Moorea embodies the subtle harmony of Polynesian tradition and contemporary sophistication.

Let yourself be enchanted by a collection of exclusive accommodations: rooms overlooking lush gardens, overwater bungalows, or beachfront and garden bungalows with private pools, the promise of an intimate and unforgettable escape.







Premium Overwater Bungalows

48 m² / 18 units

Ocean view, Solarium with direct lagoon access, Glass floor panel for lagoon viewing,
Air conditioning, Espresso machine, Ceiling fan,
Minibar, Complimentary Wi-Fi, Television, Walk-in shower, Hairdryer,
One king-size bed and one single bed,
Iron & ironing board, In-room safe.



Overwater Bungalows

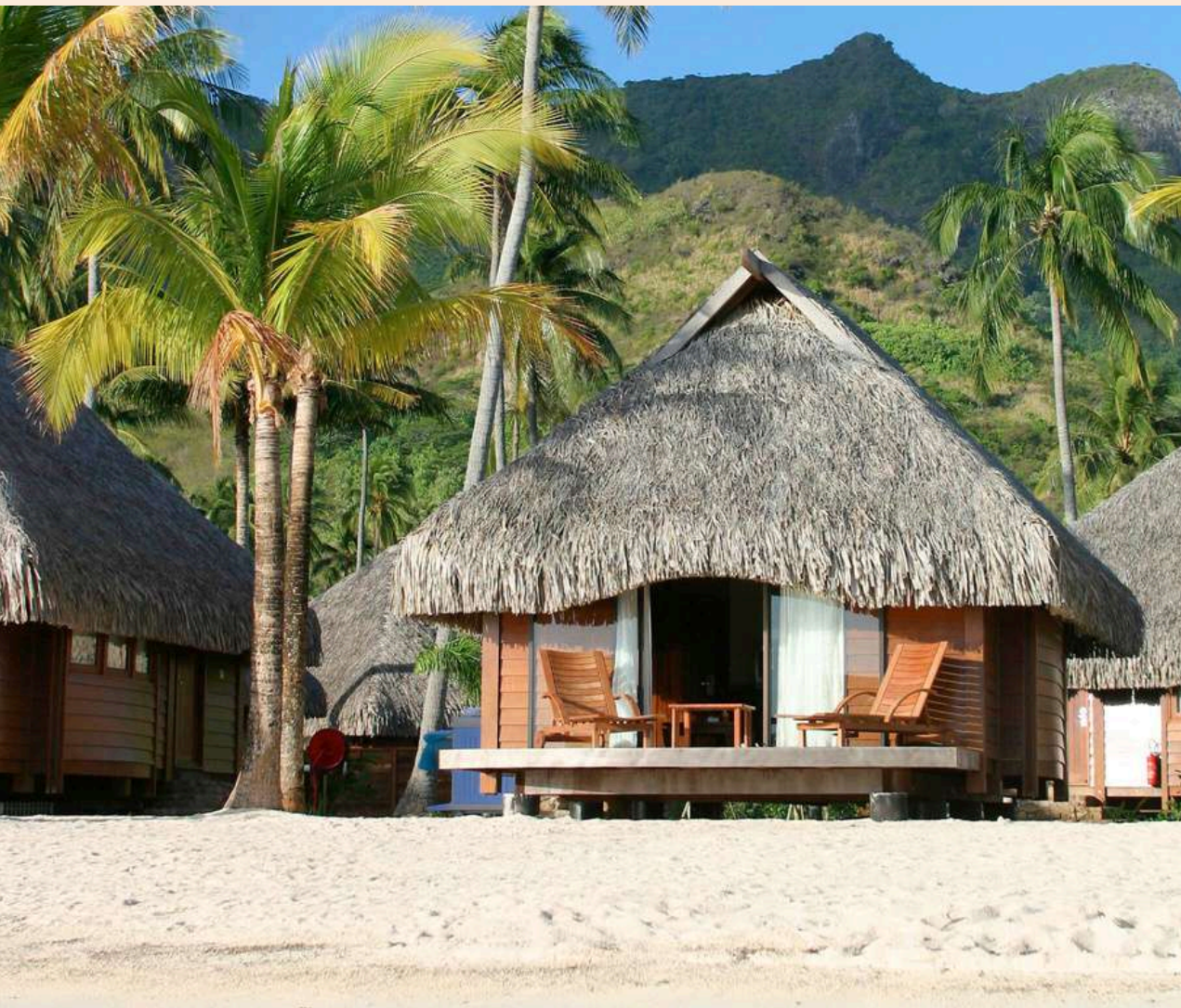
48 m² / 10 units

Lagoon or mountain view, Solarium with direct lagoon access, Glass floor panel for lagoon viewing,
Air conditioning, Espresso machine, Ceiling fan,
Minibar, Complimentary Wi-Fi, Television, Walk-in shower, Hairdryer,
One king-size bed and one single bed,
Iron & ironing board, In-room safe.

Beach Bungalows

44 m² / 8 units

Beachfront, Ocean-facing, Terrace with sun loungers, Direct beach access,
Air conditioning, Ceiling fan,
Minibar, Complimentary Wi-Fi, Television, Walk-in shower, Hairdryer,
One king-size bed and one single bed,
Iron & ironing board, In-room safe.



Garden Bungalows with Private Pool

48 m² / 28 units

Private pool, Terrace,
Air conditioning, Ceiling fan,
Minibar, Complimentary Wi-Fi, Television, Walk-in shower, Hairdryer,
One king-size bed and one single bed,
Iron & ironing board, In-room safe.

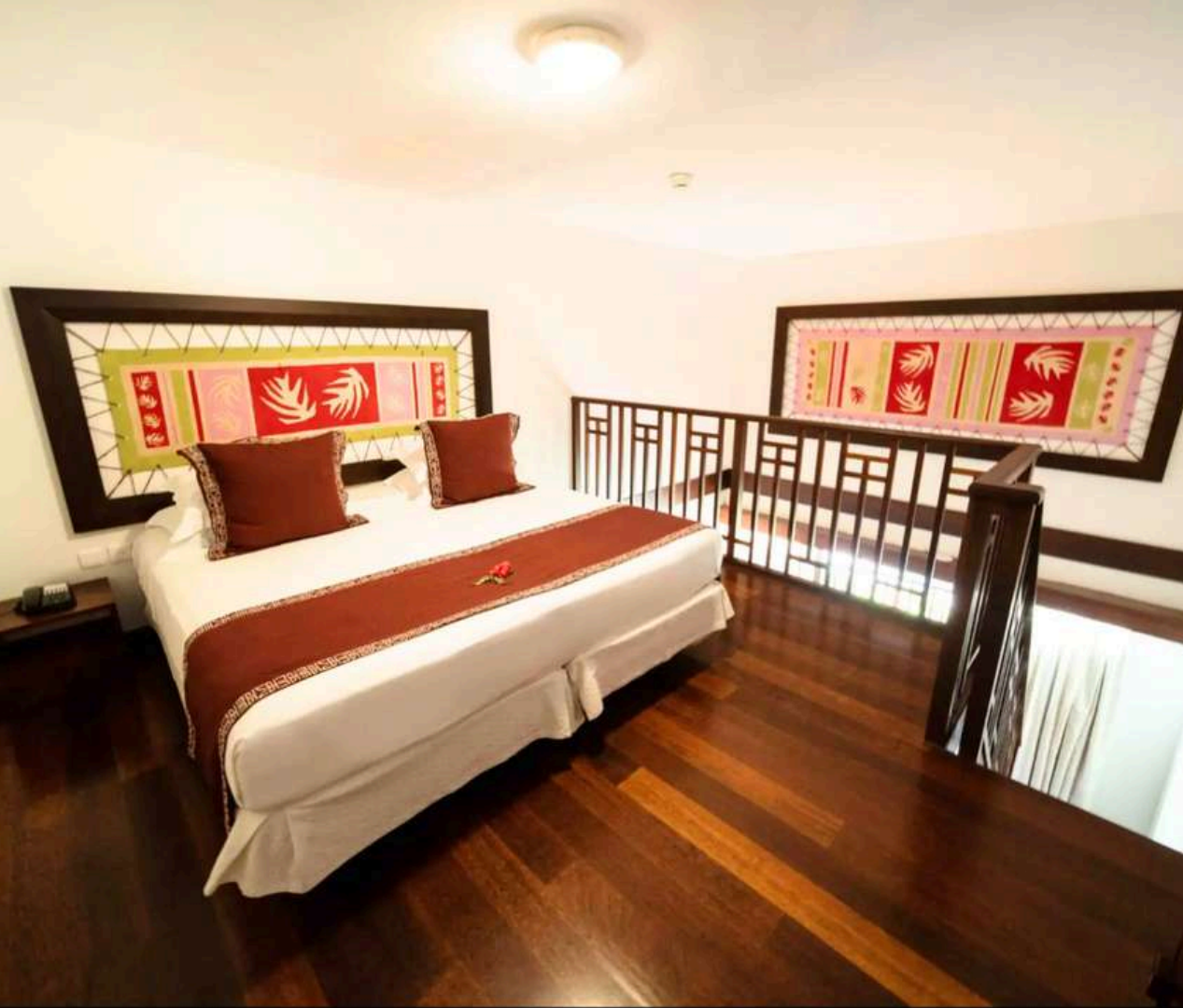




Garden View Room

44 m² / 17 units

Garden view,
Air conditioning, Balcony,
Minibar, Complimentary Wi-Fi, Television, Walk-in shower, Hairdryer,
One king-size bed and one single bed,
Iron & ironing board, In-room safe.



Garden View Duplex with Kitchenette

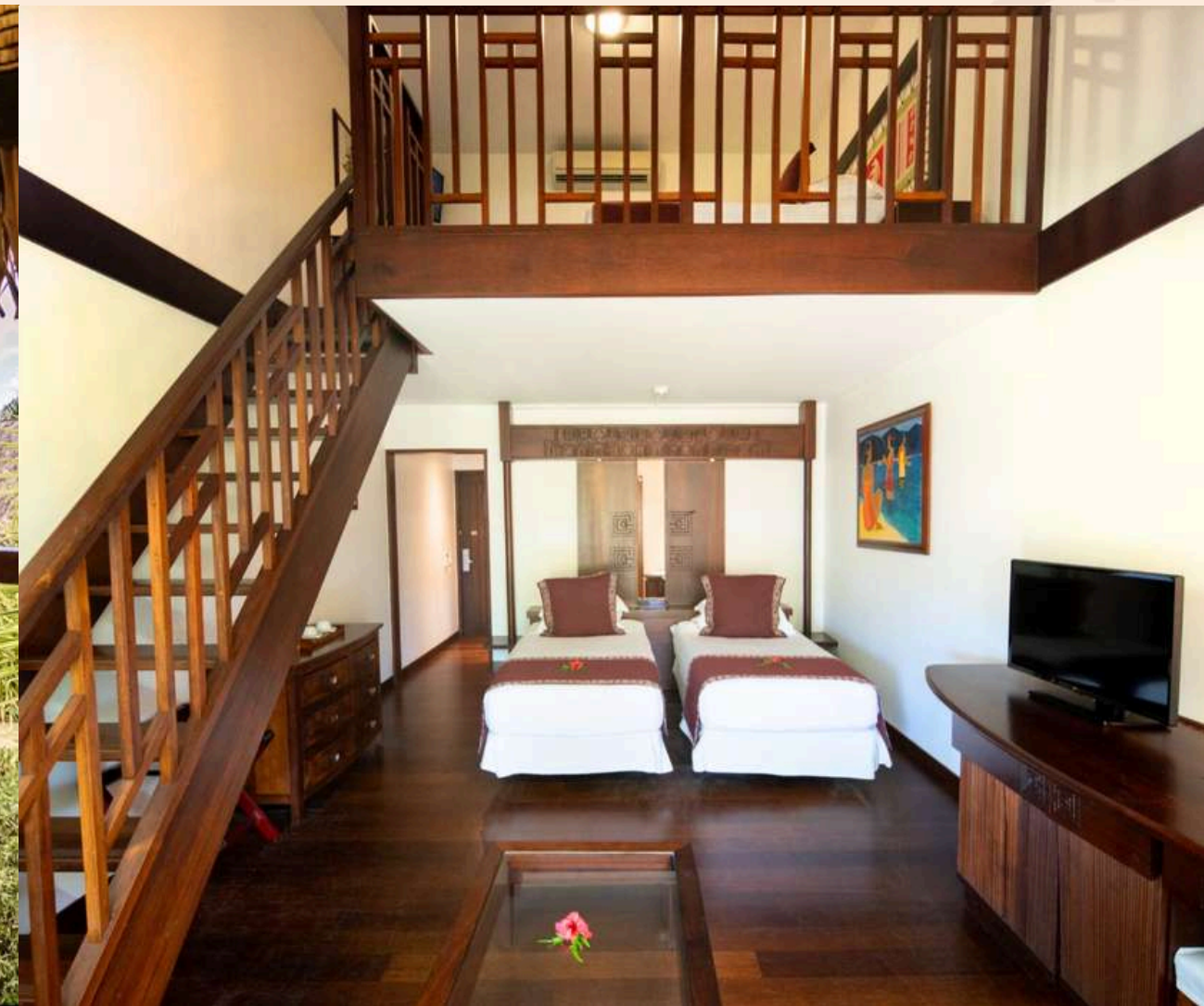
59 m² / 2 units

Kitchenette, Mezzanine,
Air conditioning, Balcony,
Minibar, Complimentary Wi-Fi, Television, Walk-in shower, Hairdryer,
One king-size bed and one single bed,
Iron & ironing board, In-room safe.

Garden View Family Duplex

59 m² / 6 units

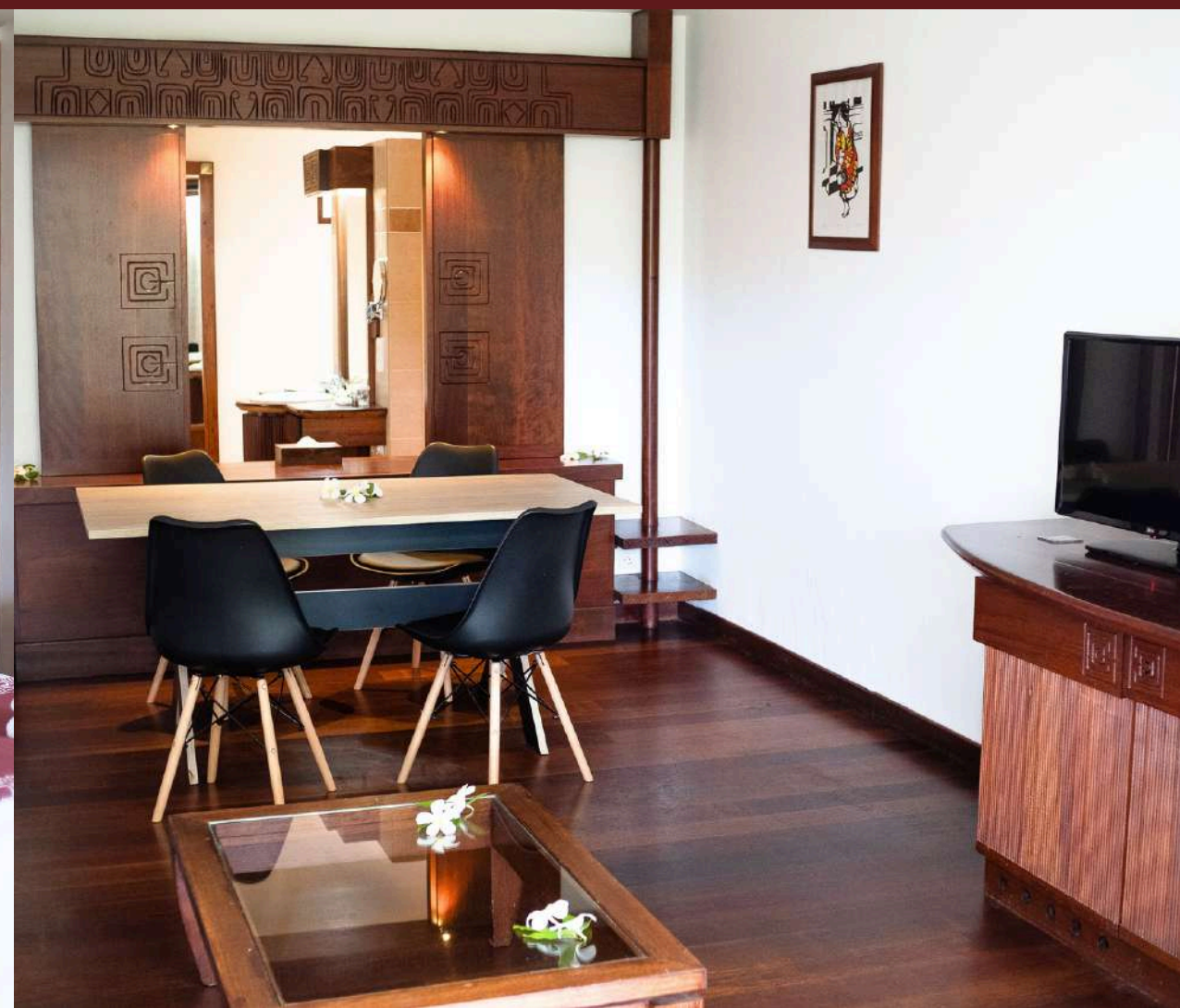
Garden view, Balcony,
Air conditioning,
Minibar, Complimentary Wi-Fi, Television,
Walk-in shower, Hairdryer, One king-size bed and one single bed,
Iron & ironing board, In-room safe.



Garden Suite

88 m² / 1 unit

Garden view, Balcony,
Air conditioning, Coffee machine,
Minibar, Complimentary Wi-Fi, Television,
Walk-in shower, Hairdryer, One king-size bed and one single bed,
Iron & ironing board, In-room safe.





Tastes and Fragrances of Polynesia



The Mahana'i

The “Mahana’i” restaurant combines French and Polynesian cuisine in a relaxed atmosphere.

Don’t miss our local specialties or the Saturday Polynesian Night, featuring a buffet and traditional dance show.

Miti Bar & Terrasse

The exotic setting of our poolside bar and restaurant makes it the perfect place to gather with friends.

Its terrace welcomes you under the shade of parasols, offering a relaxed atmosphere throughout the day.





Our Events

Reservations & Information: +689 40 55 17 55

Wednesdays & Saturdays: Polynesian Dance Show from 6:30 p.m. at the Mahana'i Restaurant

Fridays: Live Music from 6:00 p.m. at the Miti Bar

Happy Hour from 5:00 p.m. to 7:00 p.m.

A romantic couple stands on a wooden pier over a lagoon at sunset. The man, in a white shirt and tan pants, holds a wine glass and has his arm around the woman. The woman, in a green dress, also holds a wine glass. They are looking out over the water towards thatched-roof buildings in the background. The sky is a mix of orange, pink, and blue, and the water reflects the colors.

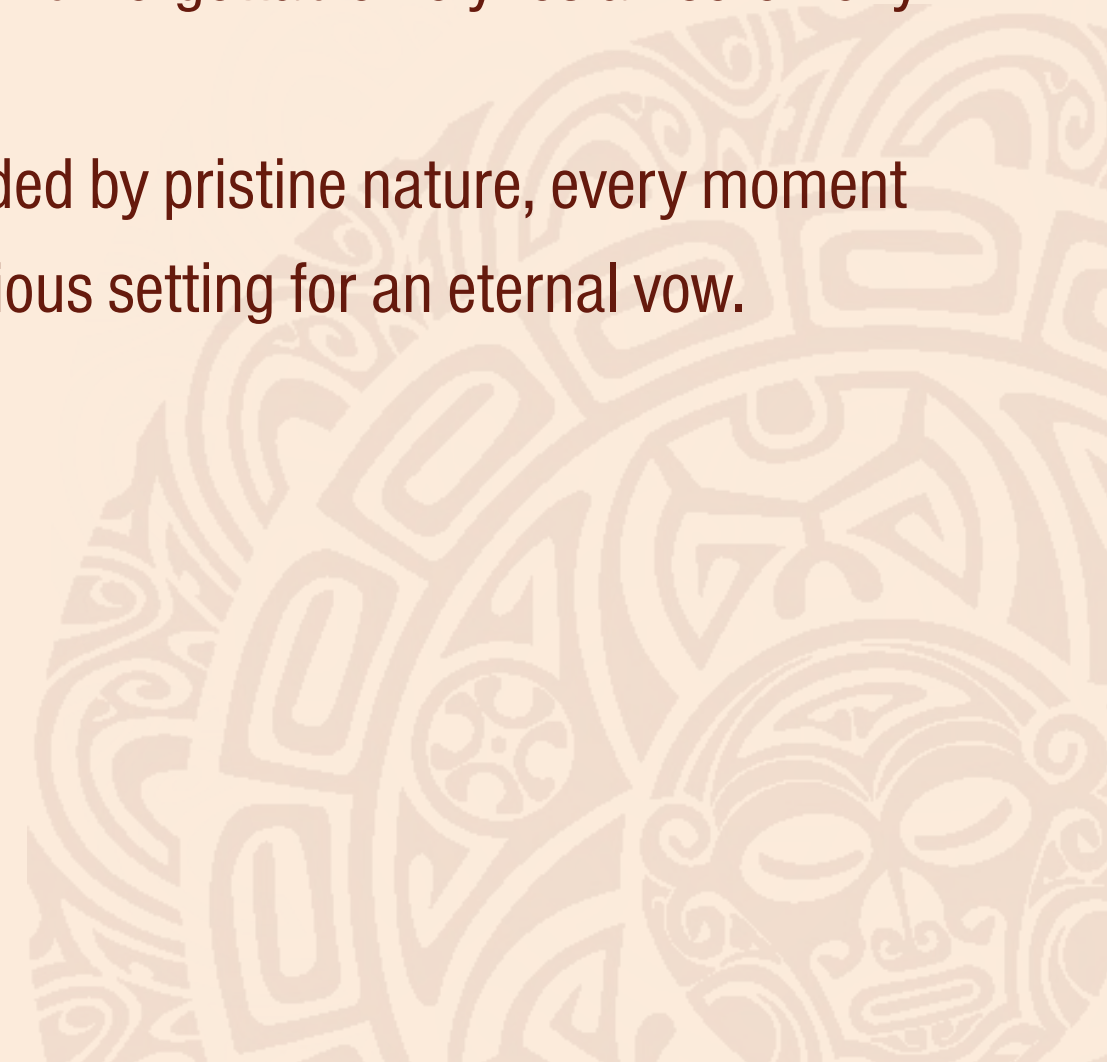
The Lagoon as the Setting
for Your Commitment



A dream escape to celebrate love.

Between majestic mountains and the endless hues of the lagoon, Manava Beach Resort & Spa Moorea offers an intimate and refined setting for an unforgettable Polynesian ceremony.

On the beach, surrounded by pristine nature, every moment becomes a precious setting for an eternal vow.





An aerial photograph of a tropical reef. The water is crystal clear, showing the sandy bottom and dark coral patches. Three people are riding jet skis in the lower right quadrant. In the upper left, a small group of people is visible in the water. The overall scene is vibrant and scenic.

Explore Moorea, Embrace the Moment

Coral Grafting



Diving



Flower Crown Workshop



Relaxation & Wellness



Heir to an ancestral art, Manea Spa embodies the very essence of Polynesian well-being.

Inspired by Taurumi, the traditional Tahitian massage, it preserves sacred gestures that blend softness, spiritual harmony, and inner reconnection.

Nestled in the heart of the resort, this oasis of serenity draws its strength from nature and Polynesian rituals.

Each treatment becomes a sensory journey, an invitation to let go.

Our Facilities

The reception area, three massage rooms (two with private terraces), a rain shower room, an aesthetic treatment room with terrace, a steam room, a jet shower room, a heated pool, three shower cabins, and one restroom.



Sustainable Elegance



*Our commitment to sustainable development is
built upon five key pillars*

Responsible governance

Preserved “fenua”

Responsible consumption

Circular economy

Thriving and fulfilled team members



CSR Strategy and Commitment

EarthCheck is an international sustainable tourism certification that supports destinations and businesses in improving their environmental, social, and economic performance, in accordance with strict scientific standards.

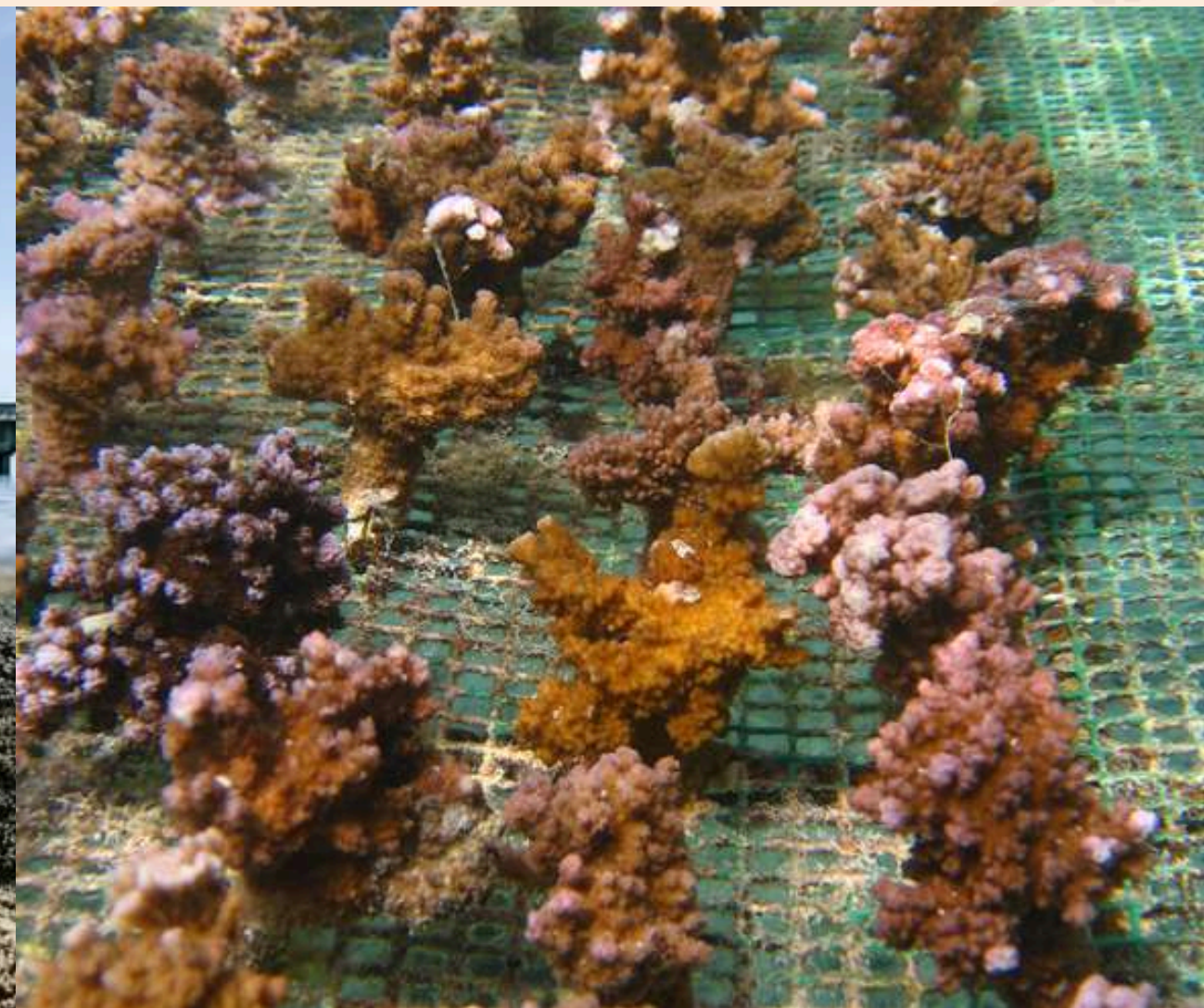
CSR Label: this certification recognizes companies committed to social, environmental, and ethical responsibility. Audited by AFNOR, we have earned this label as a testament to our ongoing commitment to sustainability.



Coral Reef Studies and Restoration Project

Located within a regulated fishing zone, the hotel runs a reef restoration program to help preserve the lagoon's biodiversity. While Polynesia's coral reefs remain in relatively good condition, they are still vulnerable to human and climate-related pressures.

Broken corals are collected and placed in nurseries, where they continue to grow safely before being replanted in degraded areas. Through innovative conservation techniques, the hotel offers these corals a second life and actively contributes to the protection of the reef.



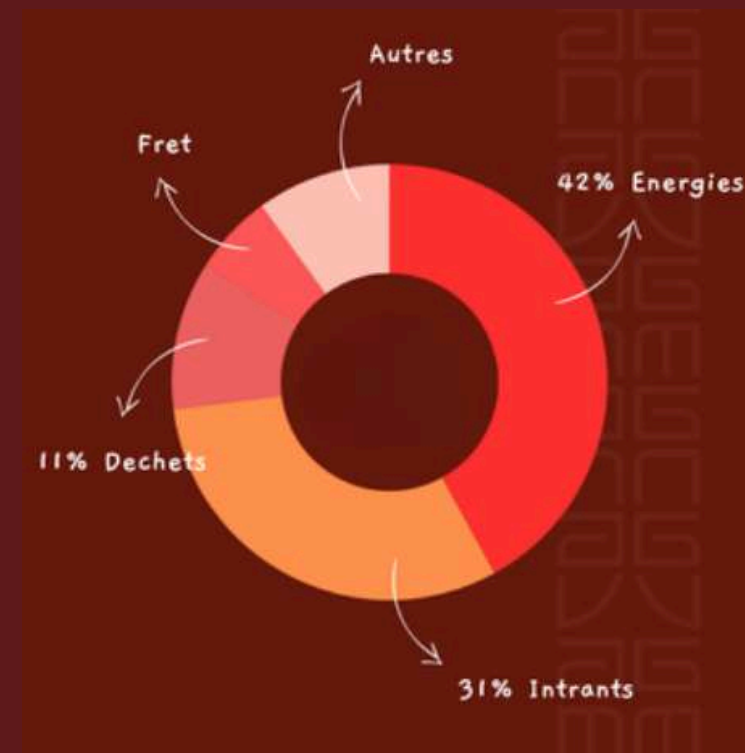


Reducing Our Environmental Impact 2024 Carbon Footprint

*Manava completed its carbon footprint assessment
in 2024. This tool helps businesses measure
and reduce their carbon impact.*

In 2023, we emitted 2,614 t CO₂e
Equivalent to the annual emissions
of 247 Polynesians or 669 one-way
Paris-Papeete flights for one person.

Results



Installation of solar panels and solar water heaters
Improved energy efficiency of air conditioning systems
Replacement of the service vehicle with an electric car

Actions

Building Tomorrow Together

We had the pleasure of visiting the Puna Reo association, which we have proudly supported for several years. The association is dedicated to preserving and promoting Polynesian culture, while providing educational support to the youth of Moorea.

Proud of this commitment, we are delighted to contribute each year to the development of their cultural and educational projects, a support that resonates deeply with the Polynesian spirit at the heart of our hotel.



Building Tomorrow Together

Eco-contribution

Manava Beach Resort & Spa offers a voluntary eco-contribution of 300 XPF, allowing guests to support local and environmental initiatives.

The funds collected help finance coral reef restoration, support associations dedicated to environmental and cultural preservation, and contribute to sports programs for the youth of Moorea.

Slow tourism

This initiative invites you to explore the island's landscapes and connect with its natural, cultural, and culinary heritage.

We offer an exclusive 7-day stay designed to help you discover Moorea while respecting its environment and preserving its biodiversity.



South Pacific Management

HOTEL MANAGEMENT COMPANY

Pacific's Hidden Paradise

CONTACTS

Reservations : res@spmhotels.pf

Tel : +689 40 50 84 62

www.manavamoorearesort.com

Communication & Marketing :

-Tinihau BERHO : webmarketing@spmhotels.pf

-Toscane GUILLANTON : communication@spmhotels.pf

Managed by South Pacific Management

